

# QUEEN ELIZABETH'S GRAMMAR SCHOOL

The Green Road, Ashbourne, Derbyshire DE6 1EP

Tel: 01335 343 685 Email: enquiries@qegs.email Twitter: @qegs\_ashbourne

Web: www.queenelizabeths.derbyshire.sch.uk

Headteacher: Mr S Garrity

Temporary Chair of Governors: Mr N Moore



23<sup>rd</sup> February 2024

Dear Parents, Carers, Students and Staff

## Weekly Bulletin #21

Congratulations to both the Up'ards and the Down'ards for a successful and action-packed Shrovetide. The feedback from organisers, players and the community was that our students' conduct was superb. Well done to all.

## Mr Garrity's Afternoon Tea

Well done to the students nominated by their teachers for Afternoon Tea, great to see so many happy students being rewarded for hard work and great effort.



## Mobile Phones

As you may be aware, the Department of Education have issued new guidance on the use of mobile phones in school. This supports our own school policy as we recognise the safeguarding concerns around having phones out in school, and so phones will continue to be confiscated if seen on any student.

At QEGS, we would like to thank you for your support in helping us to support the safeguarding and wellbeing of our students.

## Change to Inset Days 2024-25

One slight change to the 2024-25 Inset Days, see below:

- 4<sup>th</sup> September 2024
- 5<sup>th</sup> September 2024
- 25<sup>th</sup> October 2024
- 6<sup>th</sup> January 2025 - new date changed from previous date of 6<sup>th</sup> February
- 7<sup>th</sup> February 2025

School will be open to staff on these days but closed to students.

## Red Nose Day

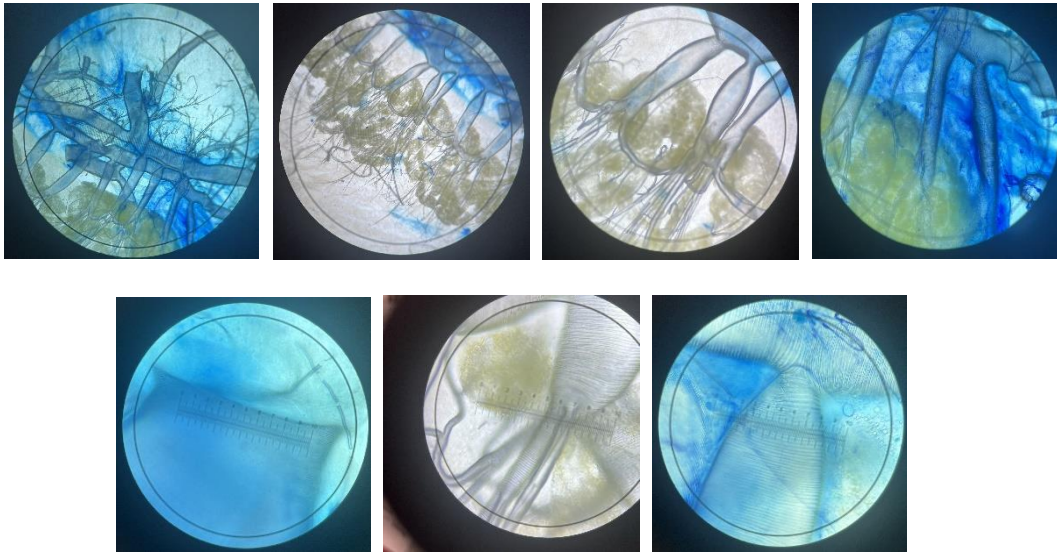
This year we will be supporting Red Nose Day on Friday 15<sup>th</sup> March. Our Student Leadership team are busy creating lots of fun fundraising events - more information will follow. Please support this fantastic charity but donating what you can: <https://app.parentpay.com/ParentPayShop/Foc/Default.aspx?shopid=13675>

## Biology

A huge congratulations to three of our Year 12 Biology students (Evie H, Martha G and Grace D) who received a 'highly commended' award for their response to Round 1 of the Cambridge Biology Challenge – Why don't animals have wheels? The competition was very intense, with over 400 entries from over 1500 people. The judges commented on their fantastic research into material densities. Well done! The team are now hard at work writing their submission for the second round – 'Are humans still evolving?' We can't wait to read it!



As part of our gas exchange topic our Year 12 biologists dissected locusts and produced these brilliant microscope images.



## Sixth Form Update

Year 13 had their Parent Consultation Evenings on Thursday where parents were able to speak to teachers about students' progress in their subjects. Mrs Thrupp, KS5 Learning Coach was also there to advise and arrange follow up with students. If you were unable to attend this event and would like to speak with your child's teachers, please email [sixthform@queenelizabeths.derbyshire.sch.uk](mailto:sixthform@queenelizabeths.derbyshire.sch.uk).

Also, this week, Year 13 psychology students had visitors from Ashbourne Primary School to assist with Cognition testing. Students and primary participants had a lively and informative session.



## Year 13 PCE

Thank you for attending Year 13 PCE last night, please use this link to provide us with feedback to help us improve future events. <https://forms.office.com/e/gDUQjQyu7R>



### World Book Day

For World Book Day, on Thursday 7<sup>th</sup> March, the **Library Book Club** are holding a **GREAT BIG BOOK SWAP** for Students and Staff. All You have to do is **BRING A BOOK & TAKE A BOOK**.

All age range books are welcome , from baby to adult – as long as they are in good condition and you do have permission to swap them (not library books, ha,ha!)

You can bring your book to the Library before World Book Day and ask the Librarians to keep it safe for you – ready for Swap Day!

### Canteen School Meals

Next week's canteen menu is the following:-

Week 1: <https://www.schoolmeals.derbyshire.gov.uk/site-elements/documents/week-1.pdf>

### QEGSMAT Vacancies

Please keep an eye on our vacancies at QEGS and within the trust. Further details can be found at: <https://www.qegsmat.com/current-vacancies/>

### Upcoming Key Dates This Term:

- 26<sup>th</sup> February – 1<sup>st</sup> March – Year 12 mock exams
- 27<sup>th</sup> February – Year 13 student university finance talk
- 28<sup>th</sup> February – Primary Arts Day
- 5<sup>th</sup> March – Year 13 Business btec Bullring trip
- 6<sup>th</sup> March – Uniform pop up shop – 3:30-5:30
- 7<sup>th</sup> March – Hadestown Lyrical Theatre trip
- 7<sup>th</sup> March – World Book Day
- w/c 11<sup>th</sup> March – Show Show week
- 19<sup>th</sup> March – Year 9 Art Harry Potter trip
- 19<sup>th</sup> March – DoFE Awards Ceremony
- 21<sup>st</sup> March – Year 12 PCE

Your menu					
Week 1					
	Monday	Tuesday	Wednesday	Thursday	Friday
B R E A K	Chili baked egg with a tortilla V (Eggs baked in spicy tomato sauce) Buttered toast V Bacon cob Buttered bagel V Pizza crumpet V	Bacon with cream cheese bagel Buttered toast V Sausage cob Buttered crumpet V Pizza slice V	Brunch muffin V (Quorn sausage pattie & poached egg in a muffin) Buttered toast V Bacon cob Buttered teacake V Pita pizza V	Cheese and bean toastie V Buttered toast V Bacon cob Buttered bagel V Pizza wrap V	Curry folded naan Buttered toast V Bacon cob Cheesecake V Pizza slice V
	Paninis Cheese panini V Cheese & ham panini Tikka chicken wrap or panini Jacket potato With a selection of fillings & toppings Pasta pot Marinara pasta bowl V Sub Meatball sub	Paninis Cheese panini V Cheese & ham panini Sweet chili chicken wrap or panini Jacket potato With a selection of fillings & toppings Pasta pot Americana pasta bowl V Burrito Roasted Veg Burrito V	Paninis Cheese panini V Cheese & ham panini Piri piri chicken wrap or panini Jacket potato With a selection of fillings & toppings Pasta pot Creamy tomato and spinach pasta bowl V Cob Roast of the day	Paninis Cheese panini V Cheese & ham panini Mediterranean chicken wrap or panini Jacket potato With a selection of fillings & toppings Pasta pot Porcedoro pasta bowl V Other Quesadilla	Paninis Cheese panini V Cheese & ham panini BBQ chicken wrap or panini Jacket potato With a selection of fillings & toppings Pasta pot Macaroni cheese bowl V Sandwich Fish Finger sandwich
	M A I N	Organic beef meatballs or Vegan meatballs V Served with pasta, Mediterranean sauce, homemade garlic dough balls, and vegetables. Chocolate orange cookie Strawberry muffin Lime & coconut sponge	Chicken eschilada or Quorn eschilada V Served with potato wedges, homemade coleslaw, and crispy salad Raisin oat cookie Chocolate crunch Confit tart	Roast gammon & stuffing or Crumb topped vegetable bake V Served with creamed potatoes, vegetables, and gravy Shortbread slice Lemon muffin Summer fruit crumble	Chicken tikka masala or Tomato and chickpea curry V Served with rice, vegetables, and naan Cookie Banana flapjack Berry sponge
All main and Grab & Go menu options are part of the meal deal					
Fresh fruit & yoghurt available daily V = Vegan V = Vegetarian For information regarding allergens please speak with the school.					

FOOD CENTRAL

- 26<sup>th</sup> March – Year 7 PCE
- 27<sup>th</sup> March – Dance and Drama Performance evening
- 26<sup>th</sup> March – Bronze DofE training (meal prep)
- 28<sup>th</sup> March – Year 13 Physics Sheffield Hallam Trip
- Last Day of term

### **Finally**

We regularly carry out student and staff voice and both groups have raised the challenges of moving between the Green Road and Boothby Campuses, accessing toilets and having sufficient time to eat and drink as a concern. As a result, we are looking to adjust the lesson and break structure for September 2024. The plan is to have slightly longer and fewer lessons (4 lessons instead of 5), with each lesson having a break between the next one. The plan is to have:

- 4x 75 minute lessons
- 2 breaks plus a lunchtime each day

The start and end times of the school day will remain the same.

Advantages of this structure include:

- Reduced number of lesson changeovers/movement between sites
- Extended time for practical activities in lessons
- Improved access to food and drink in the canteens, reducing queuing time and congestion
- Improving student wellbeing with longer breaks, instead of 5 minute changeovers.

Next week, in form time, we will be asking for student feedback on the proposed model for the school day, including the timing of breaks and lunch (how many breaks before lunch, one or two? What time of day should lunch be?). Please do take the time to discuss this with your child ahead of this feedback.

Yours faithfully



Scott Garrity  
**Headteacher**