



Safeguarding

Keeping our students safe and
supporting families

Information for students,
parents and carers

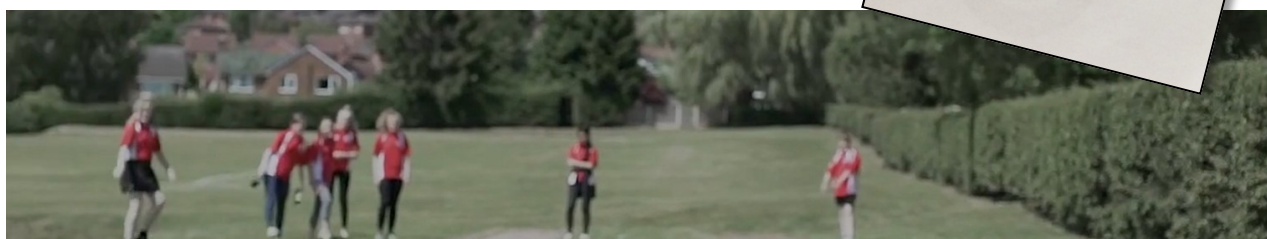
2023/24

Contents

2	Introduction: Our approach to supporting your child
3	Designated Safeguarding Lead Team
4	Our reporting procedure
5	The CPOMS Platform
5	Our awareness of local and national issues
6	Mental Health focus
7	Online Safety Focus
8	Domestic Abuses Focus
8	Child Criminal Exploitation Focus
9	CEOP's and Report Remove (Sexting support)
10	Support for Parents and Students
11	Policies and Processes

All visitors and particularly those operating within the school and engaging with our pupils are directed to familiarise themselves with this leaflet. This leaflet holds key information in relation to reporting safeguarding concerns, health and safety concerns and emergency procedures.

If you have received a copy of this leaflet prior to your visit or you have downloaded this information booklet from our website prior to your arrival, please do pick up a copy of the leaflet shown here from front reception on arrival. You will be directed by reception staff to wear the designated lanyard on sign in to site and this must be worn throughout your visit.



Introduction

Our approach to supporting your child



Dear Parent/Carer

The school values promote our students to be respectful of others and themselves. They take responsibility for themselves and those around them and, in turn, be ready to achieve knowing that we have all worked together to create a safe working environment together.

Our staff as part of the QEGS multi-academy trust work together as part of a whole trust approach. Each of our staff recognise that they have a responsibility to the safeguarding of all children attending the school and through the starting point of "it could happen here" we hold a strong culture and awareness of identifying concerns, reporting and acting upon Information observed and received.

This information booklet is produced so that all members of our school community have access to information and understand our approach, our procedures and are able to work with us to ensure children are best served and supported.

Our Child Protection and Safeguarding policy sets out how we as a school safeguard and promote children's welfare to keep our learners from abuse, neglect and exploitation.

Our website holds key information specifically around safeguarding at this link:
<https://www.queenelizabeths.derbyshire.sch.uk/key-information/safeguarding-sign-post/#1585662148100-071a4380-1654>

I hope you find this booklet both informative and useful.

Sincerely,

Mr. J Amps
Deputy Headteacher
Queen Elizabeths Grammar School

The Safeguarding Team

QUEEN ELIZABETH'S GRAMMAR SCHOOL SAFEGUARDING

Designated Safeguarding Lead:



Mr Amps

Deputy Headteacher and
Designated Safeguarding Lead (DSL)

Deputy Designated Safeguarding Leads:



Mr Drake

Child Protection Officer
and Deputy DSL



Mrs Allen

Assistant Headteacher
and Deputy DSL



Mr Bembridge

Assistant Headteacher
and Deputy DSL



Mrs Pett

Family Support Worker
and Deputy DSL

Online Safety:



Miss George

Online Safety
Co-ordinator & CEOP
Ambassador

Prevent:



Mr Drake

Child Protection Officer
and Prevent Lead

Out of Hours Safeguarding Concerns Contact:
'Call Derbyshire' on 01629 533190

Our reporting procedure

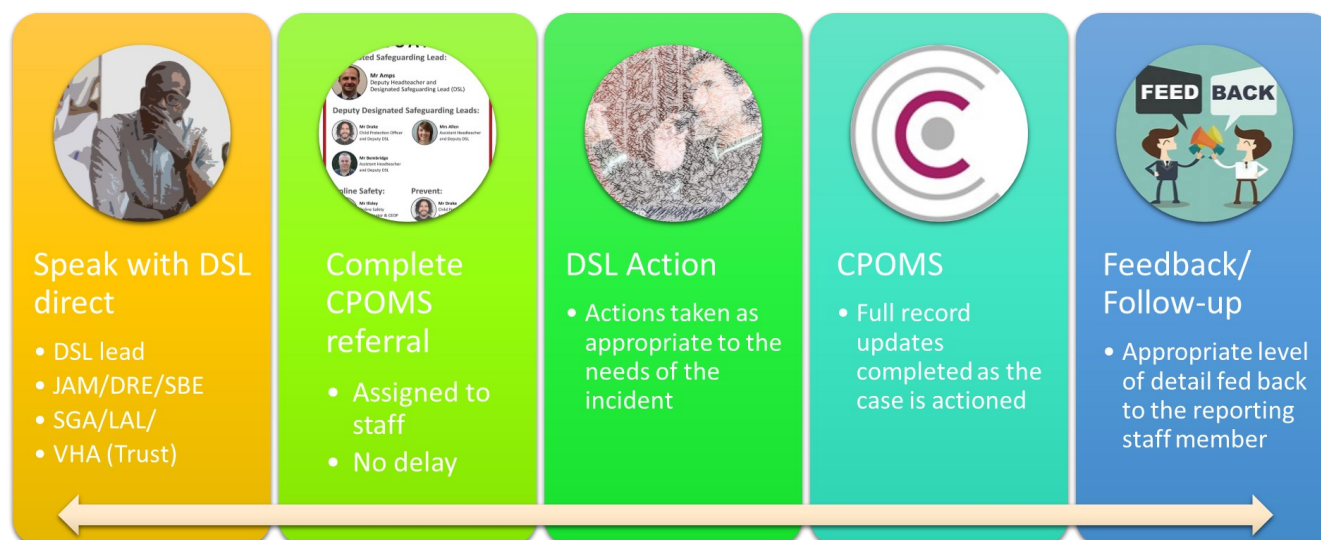
The importance of a clear crisp reporting structure

We use a clear and concise reporting process at Queen Elizabeths Grammar School. The procedure is designed to ensure that staff maintain a culture of in-person reporting and that all reports remain the individual and collective responsibility of all those concerned as the Designated Safeguarding Lead is engaged in addressing the report.

Where do I report a concern or disclosure?

Any staff member, either permanent or on shorter term or daily contract must be clear that **reporting forms** are now available in the main staff room on level 3, from reception and from the pastoral room in 540 on the main site as well as from reception on the Boothby campus. From September staff will also have access to report direct to the online platform CPOMS after speaking to a DSL in person.

Once initial discussion and report is completed it is assigned to a **DSL**. If the report is time sensitive and a form cannot be completed, the staff member must immediately report to a **DSL or Headteacher who will review and outline their next steps** to the reporting staff member. **Action** will then be taken and **report updates recorded** on CPOMS. The **reporting staff** will receive **feedback/confirmation** of actions.



If you want to discuss this further please contact Mr Amps:
Amps@queenelizabeths.derbyshire.sch.uk

The CPOMS Platform

How are safeguarding reports recorded?

CPOMS

At Queen Elizabeths Grammar School we are moving to the CPOMS safeguarding platform from September 2023 to match the other secondary schools within the QEGSMAT trust

CPOMS

The CPOMS platform is used by Designated Safeguarding Leaders including our Headteacher, Deputy Headteacher Child Protection Officer, Family Support Worker, Teaching Heads of Year, Deputy Heads of Year as well as key pastoral and SEND staff. All staff have access to report concerns to the team and all staff complete annual training. In addition, DSL's share information with staff on a need to know basis and report back to senior leadership as well as our governing board and the local authority.

Our awareness of key local and national issues

Our world is a complex place to navigate. Never more so than now have young people had such access to the whole world but also been exposed to its pressures.

As a staff, we at Queen Elizabeths Grammar School recognise that our young people are accessing our lessons, listening to our advice but also read, watch and receive information from sources outside of school that may be both balanced as well as biased and imbalanced in their composition and purpose. Our role as educators is to support young people in navigating a technologically advanced world and equipment to enable them to develop well informed personal views that support them in developing as healthy, happy and positive members of our community in Ashbourne, its surrounding areas of Derbyshire and further afield.

Recognising the turbulence and challenges they have faced most recently in relation to the pandemic as well as the worlds political, financial and social landscape we recognise that our work focuses around 4 key areas

- 1: Mental Health
- 2: Online Safety
- 3: Domestic pressures and abuses
- 4: Child at Risk of Exploitation

While every report, no matter is overarching type, is taken and addressed with the utmost seriousness, these areas of focus that shape our training for staff, assembly and curriculum inputs.

Should you need further information around our use of the CPOMS platform please contact: Mr Amps — Amps@queenelizabeths.derbyshire.sch.uk



Mental Health

At Queen Elizabeths Grammar School we all belong

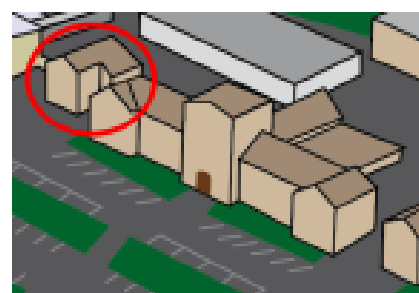
For many years our mental health was something that remained unspoken and all too often a taboo subject or one that received little or no support. While, as a society, we have now reached a point where issues around our mental health are now spoken of more, and better supported, there is still work to do in fully understanding and effectively supporting people at the most challenging times of their lives.

At Queen Elizabeths Grammar School we recognise that young people from entry to us in year 7, through to year 11 and those within our sixth form will look to us for support as well as their families and friends.



Through Assemblies, our form tutors, our RS and PSHE curriculums as well as our pastoral staffing, we aim to be a listening ear that can both help within school but also signpost pupils and their families to support structures as they grow and develop.

We want all pupils to feel like they belong, that they are listened to and that they are able to access support. At Queen Elizabeth's School students can seek initial support in our 540 pastoral support room. Our Deputy Heads of Year work from this base with one of them walking the corridors or on-call in this space throughout the day.



Where students need further support we have our NHS counselling service available on Tuesday's and our Child Protection officer and Family Support work also work in school throughout the week with those in need of this support.

We are also able to sign post and connect students and families with other agencies such as sound minds, young minds and the Derby and Derbyshire Emotional Health and Wellbeing services. These are available to serve young people with and without additional learning needs as well as parents and carers.



Website link:

<https://derbyandderbyshireemotionalhealthandwellbeing.uk/child-young-person>

Should you need further information about our approach to supporting student mental health please contact: Mr Amps — Amps@queenelizabeths.derbyshire.sch.uk

Online Safety

How we approach online safety in and out of school

All year groups receive safeguarding assembly inputs around online safety topics such as digital footprints, protecting your personal data and keeping safe online.

All students receive inputs annually around cyber bullying and looking after your mental health relating to online and device usage. As each half term progresses, heads of year, senior leaders and the DSL team add inputs for specific groups where need is identified.

Main areas of curriculum focus per year group are as below:

Year 7 Computing: Rights and Responsibilities, Appropriate Responses, Digital Footprint, Communication Online (Who are you talking to?)

Year 7 PSHE: Social Media — power and pitfalls

Year 8 Computing: Media Literacy, Healthy Relationships (Sexting and language)

Year 8 PSHE: Digital Resilience

Year 9 PSHE: Cyberbullying

Year 10 PSHE: Persuasive Technology

Year 11 PSHE: Positive Relationships (Sexting)

Sixth Form: Digital Footprint, reputation management (via assemblies)



smoothwall

his content has been blocked because it does not comply with the Student Policy settings
To override with Staff Policy settings - Click [Here](#)
The request was logged.



Network Filtering and notification System

Within school we use a system called **Smoothwall** to oversee, monitor and filter content. This system operates partly on advisory and banned word list. This provides feedback live to the safeguarding team and identifies which users are attempting to access specific content.

This allows our team to monitor and educate students on safe use and support them if they are searching for content of a specific type that has raised a notification.



Our Safeguarding lead also uses the safer school app and we are active members of the 360Safe partnership online. This provides up to date and topical notifications to alert us as a school to new or emerging concerns and engages us with ongoing training and advice



Domestic Pressures and Abuses

As a school and in partnership with the local authority, we recognise that for many reasons families and individual people are at times at risk of, or subject to challenging domestic situations.

Children, young people and families who are affected by domestic abuse or violence can get support, including refuge accommodation, by contacting Derbyshire Domestic Abuse Helpline. It's available 24 hours per day, 7 days per week and is a single point of contact to get the help needed. Please speak to us if you do not feel able to make contact with the links below or need support in doing so.

This information is available through their website:

<https://www.derbyshire.gov.uk/social-health/children-and-families/support-for-families/domestic-abuse/domestic-abuse.aspx>

You can also access information through the Safer Derbyshire website at:

<https://www.saferderbyshire.gov.uk/what-we-do/domestic-abuse/domestic-abuse.aspx>

There is a Women and Childrens Aid site at:

<https://www.womensaid.org.uk/>

And national based support is available through:

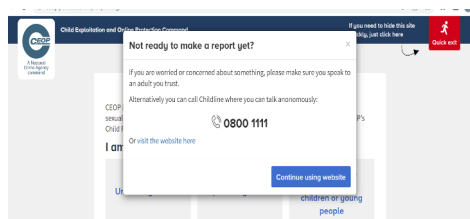
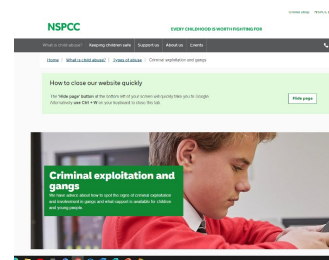
<https://www.nationaldahelpline.org.uk/>

Child at Risk of Exploitation

Child exploitation is a priority area for us as a school and Derbyshire DDSCP partnership group which we attend. More information can be found at this link:

https://derbyshirescbs.proceduresonline.com/p_ch_risk_exploit.html

We sign post students to our pastoral staff, counselling services and liaise with outside agencies such as safer Derbyshire, Derbyshire starting point and the NSPCC. Please contact Mr Drake—Drake@queenelizabeths.derbyshire.sch.uk if you need further information and support around DA or CRE issues.

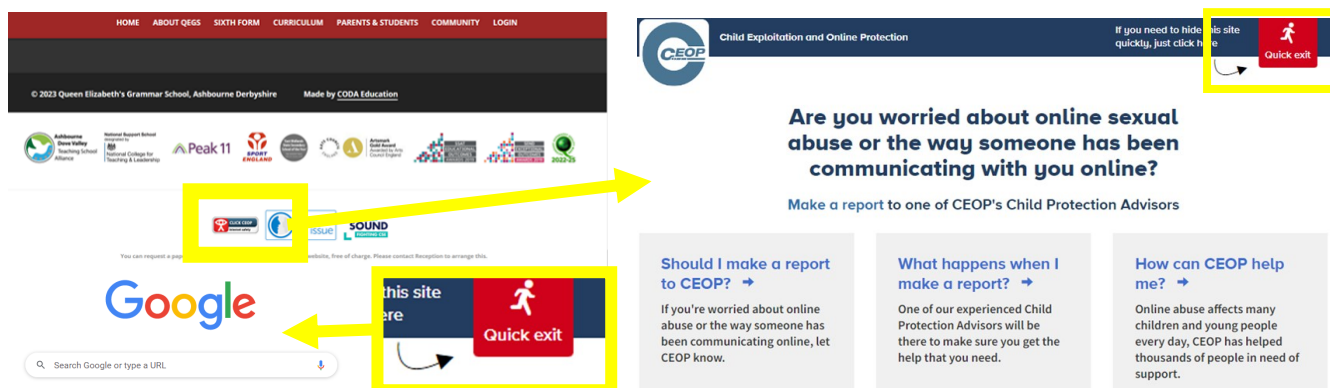


There is more information about **CEOP's** on the next page. This site also encourages young people to talk to trusted adults in school and contact agencies such as **childline** as well as providing links to these trusted sources of information and in-person help

CEOPS

At QEGS we promote the use of the CEOP's platform to our young people. <https://www.ceop.police.uk/safety-centre/>

On this platform young people can gain information as well as report in and get direct help with issues they are facing. The website is easy to navigate and hide if needed.

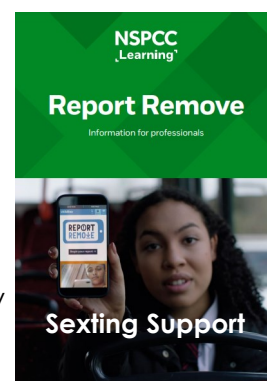


Supporting the use of the Report Remove tool

The Internet Watch Foundation (IWF) working with the NSPCC have conducted research around online content and show that nationally there has been an increase in the numbers of online sexual images involving adolescents. The IWF have identified that this rise is partly driven by an increase in 'self-produced' content, where young people have taken and shared images themselves.



The IWF and the NSPCC recognise that the reasons behind this are complex. Some may have been produced as non-sexual—joking and fun with friends as they seek recognition or feedback. Some may be consensual while some may be non-consensual and sent through peer or social group pressures and coercion. In many cases the lines become blurred in relation to what was or was not consensual.



At Queen Elizabeth's Grammar School we are aware of these pressures on young people and while we advise them not to send personal images, we are also here to support pupils if an image is produced and subsequently control of this image is lost. We as adults understand the range of ways in which young people send images – from consensual through to abusive. While it is important that young people understand the law, as highlighted by the NSPCC, the focus should be on laws that target the illegal distribution of images and not only on discouraging the initial production and sharing that breeds a blame culture when things go wrong.

As a school we will continue to prioritise prevention education that focuses on abusive and exploitive image-sharing. We aim to listen to young people and help them and their families address any issues that arise in line with our own safeguarding processes.

In addition, one website that we want everyone to be aware of is the **Report Remove** tool. This can help to take down nude or sexual images and full details can be found at this link:

<https://www.childline.org.uk/info-advice/bullying-abuse-safety/online-mobile-safety/report-remove/>



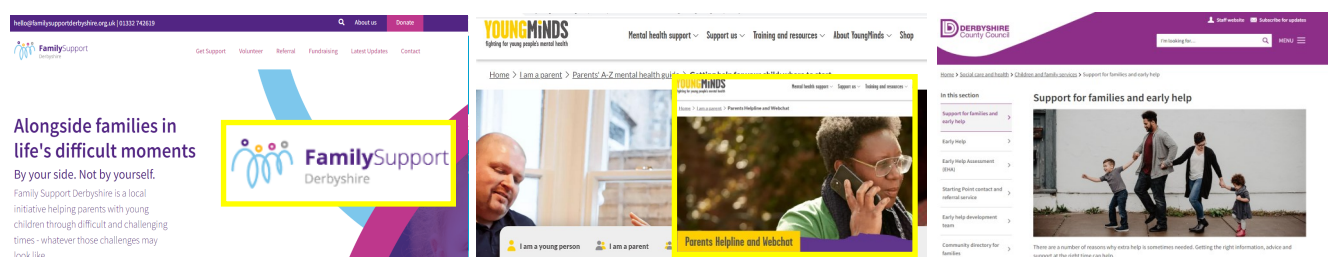
Support for Parents and Student

At Queen Elizabeths Grammar School we offer our own early help interventions. We work with the Early Help Development team at Derbyshire County Council to provide this support and refer on to them and other agencies where more specialist help is required. We want all parents and carers to feel that they can contact us directly if they need help or advice. More details about the support and guidance available across Derbyshire can be found at the links below:

QEGS CP Officer: safeguarding@queenelizabeths.derbyshire.sch.uk

Family Support Derbyshire: <https://familysupportderbyshire.org.uk/get-support/>

Young Minds Parent Helpline/Webchat: <https://www.youngminds.org.uk/parent/parents-helpline-and-webchat/>



Our Partnership with Derbyshire Safeguarding

How we aim to work with local and national agencies

Our school based team hold strong connections with our authority partners, social care and other agencies.

We hold school based **Early Help Triage** meetings where our child protection officer, family support worker and Deputy Headteacher review and discuss support with our children's service links and key safeguarding and SENDCo staff within our school and those primaries we support.

As a school we hold half termly **MAPS** meetings. These meetings allow us to raise current case concerns and seek advice, guidance and actions with the support of our Early Help Advisor as well as NHS staff the local police link as well as our **ACE link**.

Our Deputy Headteacher and Child Protection Officer attend **Derbyshire Education Hub Meetings** to ensure partnerships across the area are maintained and information is shared between agencies so that we remain up to date and informed on key notices.

We actively engage with our **social care services** where referrals are required and use our LADO service where we have concerns that require this input.

During the school day our team are on hand via our direct contact details or through reception. If you have an out of school hours concern please call as below.

Derbyshire out of hours contact number: 01629 533190

Policies and Processes

Our Policy

Like other schools, we have a Safeguarding policy and clear actions for addressing concerns as they arise.

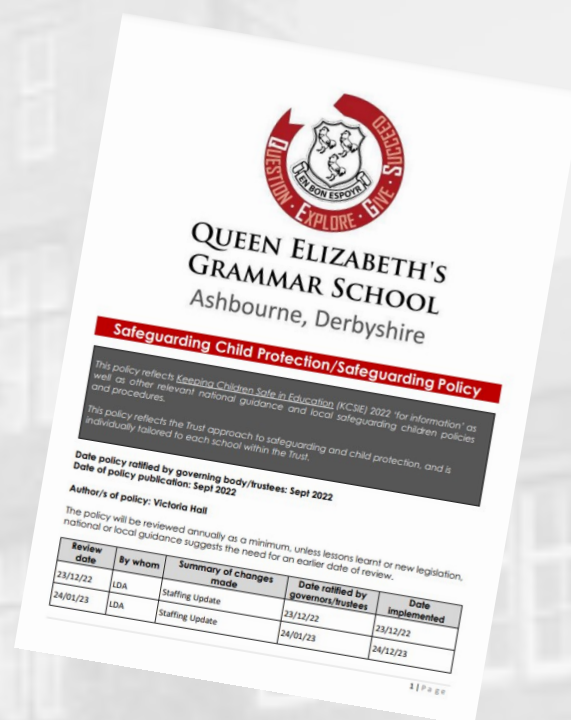
You can view, read and download a copy of our Safeguarding policy and other information direct from our school website:

Policy Link:

<https://www.queenelizabeths.derbyshire.sch.uk/key-information/policies/>

Policy URL:

<https://www.queenelizabeths.derbyshire.sch.uk/wp-content/uploads/sites/5/2023/01/Safeguarding-Child-Protection-Policy-QEGS-Jan-2022-v2.pdf>



Our Policy

Our policy reflects the Keeping Children Safe in Education (KCSIE) 2022 'for information' as well as other relevant national guidance and local safeguarding children policies and procedures. Our policy reflects the Trust approach to safeguarding and child protection, and is individually tailored to our school within the Trust framework of recommendations.

Our child protection/safeguarding policy outlines how we at Queen Elizabeth's Grammar School safeguard and promote children's welfare to keep our learners safe from abuse, neglect, and exploitation. The policy applies to all adults, including volunteers, governors/trustees, supply staff and contractors working in or on behalf of our school.

This policy is reviewed formally each year and is subject to ongoing consideration as we refer to and use the policy throughout the year.

Thank you for taking the time to review this booklet and we hope you have found it informative. Mr J Amps - Deputy Headteacher