



Queen Elizabeth's Grammar School

Safeguarding

**Keeping our students safe and
supporting families**

**Information for students,
parents and carers**

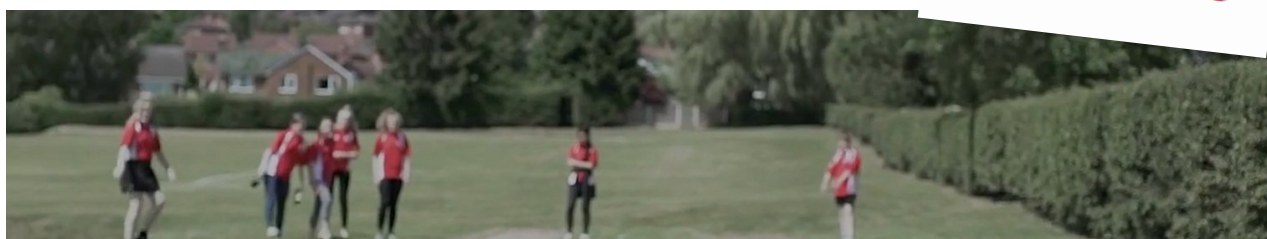
2022/23

Contents

2	Introduction: Our approach to supporting your child
3	Designated Safeguarding Lead Team
4	Our reporting procedure
5	The My Concern Platform
5	Our awareness of local and national issues
6	Mental Health focus
7	Online Safety Focus
8	Domestic Abuses Focus
8	Child Criminal Exploitation Focus
9	CEOP's and Report Remove (Sexting support)
10	Support for Parents and Students
11	Policies and Processes

Visitors: All visitors, particularly those operating within the school and engaging with our pupils, are directed to familiarise themselves with this leaflet. This leaflet holds key information in relation to reporting safeguarding concerns, health and safety concerns and emergency procedures.

If you have received a copy of this leaflet prior to your visit, or you have downloaded this information booklet from our website, please do pick up a copy of the leaflet shown here from front reception on arrival. You will be directed by reception staff to wear the designated lanyard on sign-in to site and this must be worn throughout your visit.



Introduction

Our approach to supporting your child



Dear Parent/Carer

The school values encourage our students to be **respectful** of others and themselves; to take **responsibility** for themselves and those around them and, in turn, be **ready to achieve** knowing that we have all worked together to create a safe working environment.

Our staff, as part of QEGSMAT, work together within a whole trust approach. All our staff recognise that they have a responsibility for safeguarding all children attending our school and have a consciousness of 'it could happen here'. We ensure our staff are vigilant to identifying possible concerns, reporting these to our safeguarding team, and subsequently acting upon Information observed and received.

This information booklet is produced so that all members of our school community have access to useful and important information, and can therefore understand our approach, our procedures, and are able to work *with* us to ensure our students are best served and supported.

Our Child Protection and Safeguarding policy sets out how we as a school safeguard and promote children's welfare; to keep our learners safe from abuse, neglect and exploitation.

Our website hold key information specifically around safeguarding at this link:
<https://www.queenelizabeths.derbyshire.sch.uk/key-information/safeguarding-sign-post/#1585662148100-071a4380-1654>

I hope you find this booklet both informative and useful.

Sincerely,

Mr. J Amps
Deputy Headteacher
Queen Elizabeth's Grammar School

The Safeguarding Team

QUEEN ELIZABETH'S GRAMMAR SCHOOL SAFEGUARDING

Designated Safeguarding Lead:



Mr Amps

Deputy Headteacher and
Designated Safeguarding Lead (DSL)

Deputy Designated Safeguarding Leads:



Mr Drake

Child Protection Officer
and Deputy DSL



Mrs Allen

Assistant Headteacher
and Deputy DSL



Mr Bembridge

Assistant Headteacher
and Deputy DSL



Online Safety:



Mr Illsley

Online Safety
Co-ordinator & CEOP
Ambassador

Prevent:



Mr Drake

Child Protection Officer
and Prevent Lead

**Out of Hours Safeguarding Concerns Contact:
'Call Derbyshire' on 01629 533190**

Our reporting procedure

The importance of a clear crisp reporting structure

We use a clear and concise reporting process at Queen Elizabeth's Grammar School. The process is designed to ensure that staff maintain a culture of in-person reporting, and that reports remain both the individual *and* collective responsibility of those concerned, as the Designated Safeguarding Lead is engaged in addressing the report.

Where do I report a concern or disclosure?

Any staff member, either permanent or temporary, is aware that **reporting forms** are available in the main staff room on level 3, from reception and in room 540 on the Green Road Campus, as well as from reception on the Boothby Campus.

Once completed, the form must be delivered **in-person to a DSL or DDSL** (See the page opposite). If the report is urgent and a form cannot be completed, the staff member *must* immediately report to a **DSL or Headteacher who will review and outline the next steps** to the reporting staff member.

Action will then be taken and the **report recorded** on our safeguarding platform. The **reporting staff** will receive **feedback/confirmation** of actions.



If you want to discuss this further please contact Mr Amps:
Amps@queenelizabeths.derbyshire.sch.uk

The My Concern Platform

How are safeguarding reports recorded?

My Concern

At Queen Elizabeth's Grammar School we record safeguarding concerns on an online platform which is industry standard and secure. This platform is accessible by staff trained in safeguarding at a safeguarding lead level.



Our awareness of key local and national issues

Our world is a complex place to navigate. Never more so than now have young people had such access to the whole world but also been exposed to its pressures.

As staff, we at Queen Elizabeth's Grammar School recognise that our young people are accessing our lessons, listening to our advice but also read, watch and receive information from sources outside of school that may be both balanced, as well as biased and imbalanced, in their composition and purpose. Our role as educators is to support young people to navigate a technologically advanced world, enabling them to develop well informed personal views, that will support them in developing as healthy, happy and positive members of our community.

Recognising the turbulence and challenges our students and their families have faced recently, including the COVID pandemic, as well as the worlds and Country's political, financial and social landscape, we recognise that our work focuses around 4 key areas:

1. Mental Health
2. Online Safety
3. Domestic pressures and abuses
4. Children at Risk of Exploitation

While every report, no matter the type, is taken and addressed with the utmost seriousness, these areas of focus also shape our training for staff; as well as assemblies and curriculum input for our students.

Should you need further information around our use of the My Concern platform please contact: Mr Amps — Amps@queenelizabeths.derbyshire.sch.uk

Mental Health

At Queen Elizabeth's Grammar School we all belong

For many years our mental health was something that remained unspoken and all too often a taboo subject or one that received little or no support. While, as a society, we have now reached a point where issues around our mental health are now spoken of more, and better supported, there is still work to do in fully understanding and effectively supporting people at the most challenging times of their lives.

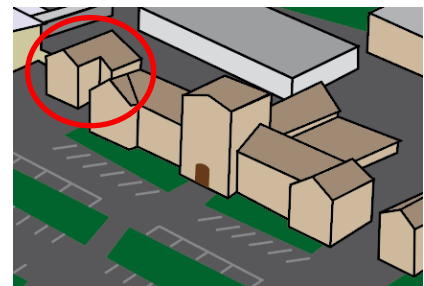
At Queen Elizabeth's Grammar School we recognise that young people from year 7 through to year 11, as well as those in our sixth form, will look to us for support, as well as their family and friends.



Through assemblies, our form tutors, our RS and PSHE curricula, as well as our pastoral staffing - we aim to be a listening ear that can support within school, but also signpost pupils and their families to support structures outside school.

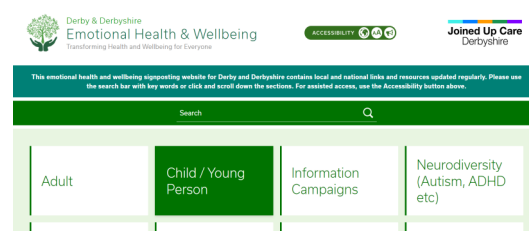
We want all pupils to feel like they belong, that they are listened to, and that they are able to access support.

At Queen Elizabeth's Grammar School students can seek initial support in our 540 pastoral support room. Our Deputy Head's of Year work from this base, and are available to support.



Where students need further support we have NHS counselling service available on a Tuesday; and our Child Protection Officer and Family Support Worker are available each day in school to give more comprehensive support and guidance as needed.

We are able to sign post and connect students and families with other agencies such as Sound Minds, Young Minds, and the Derby and Derbyshire Emotional Health and Wellbeing services. These are available to support young people as well as parents and carers.



Website link:

<https://derbyandderbyshireemotionalhealthandwellbeing.uk/child-young-person>

Should you need further information about our approach to supporting student mental health please contact: Mr Amps —
Amps@queenelizabeths.derbyshire.sch.uk

Online Safety

How we approach online safety in and out of school

All year groups receive safeguarding assemblies regularly around online safety topics such as digital footprints, protecting personal data and keeping safe online.

Our students are also taught about cyber bullying, and looking after your mental health in relation to online and device usage. As each half term progresses, key staff give broad and targeted guidance for specific groups of students where need is identified.

Our main areas of curriculum focus per year group are as below:

Year 7 Computing: Rights and Responsibilities, Appropriate Responses, Digital Footprint, Communication Online (Who are you talking to?)

Year 7 PSHE: Social Media — power and pitfalls

Year 8 Computing: Media Literacy, Healthy Relationships (Sexting and language)

Year 8 PSHE: Digital Resilience

Year 9 PSHE: Cyberbullying

Year 10 PSHE: Persuasive Technology

Year 11 PSHE: Positive Relationships (Sexting)

Sixth Form: Digital Footprint, reputation management (via assemblies)



smoothwall

This content has been blocked because it does not comply with the Student Policy settings
To override with Staff Policy settings - Click [Here](#)



Network Filtering and notification System

Within school we use a system called **Smoothwall** to oversee, monitor and filter content. This system operates partly on advisory and banned word list. This provides feedback live to the safeguarding team and identifies which users are attempting to access specific content.

This allows our team to monitor and educate students on safe use and support them if they are searching for content of a specific type that has raised a notification or concern.



Our Safeguarding lead also uses the 'Safer School' app and we are active members of the 360Safe Partnership online. This provides up to date and topical notifications to alert us to new or emerging concerns, and ensures we can engage with ongoing training and advice



Should you need further information about our approach to online safety please contact: Mr J Ilsley — IlsleyJ@queenelizabeths.derbyshire.sch.uk

Domestic Pressures and Abuse

As a school and in partnership with the local authority, we recognise that for many reasons, families and individual people may be at risk of, or subject to challenging domestic situations.

Children, young people and families who are affected by domestic abuse or violence can get support, including refuge accommodation, by contacting Derbyshire Domestic Abuse Helpline. It's available 24 hours per day, 7 days per week and is a single point of contact to support needed. Please do speak to a member of our safeguarding team if you are worried or unsure about making contact with the links below or would appreciate some support in doing so.

Derbyshire Domestic Abuse Help and Support:

<https://www.derbyshire.gov.uk/social-health/children-and-families/support-for-families/domestic-abuse/domestic-abuse.aspx>

Safer Derbyshire:

<https://www.saferderbyshire.gov.uk/what-we-do/domestic-abuse/domestic-abuse.aspx>

Women and Children's Aid:

<https://www.womensaid.org.uk/>

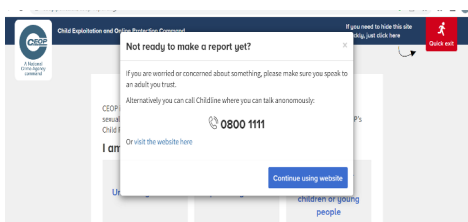
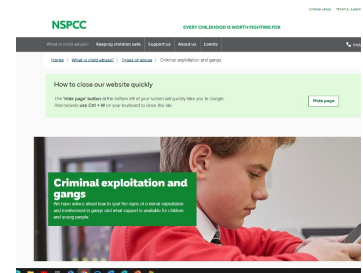
And **national support** is available through:

<https://www.nationaldahelpline.org.uk/>

Child at Risk of Exploitation

Child exploitation is a priority area for us as a school and Derbyshire DDSCP partnership group which we attend. More information can be found at this link: https://derbyshirescbs.proceduresonline.com/p_ch_risk_exploit.html

We sign post students to our pastoral staff, counselling services, and liaise with outside agencies such as Safer Derbyshire, Derbyshire Starting Point and the NSPCC. Please contact Mr Drake—Drake@queenelizabeths.derbyshire.sch.uk if you need further information and support around Domestic Abuse or Child at Risk of Exploitation concerns.



There is more information about **CEOP's** on the next page. This site also encourages young people to talk to trusted adults in school and contact agencies such as **childline** as well as providing links to these trusted sources of information and in-person help

CEOPS

At Queen Elizabeth's Grammar School we promote the use of the CEOP's platform to our young people. <https://www.ceop.police.uk/safety-centre/>
On this platform young people can get information as well as report in and get direct help with issues they are facing.



HOME ABOUT QEGS SIXTH FORM CURRICULUM PARENTS & STUDENTS COMMUNITY LOGIN

© 2022 Queen Elizabeth's Grammar School, Ashbourne Derbyshire Made by CODA Education

Child Exploitation and Online Protection

If you need to hide this site quickly, just click here

Are you worried about online sexual abuse or the way someone has been communicating with you online?

Make a report to one of CEOP's Child Protection Advisors

Should I make a report to CEOP? →
If you're worried about online abuse or the way someone has been communicating online, let CEOP know.

What happens when I make a report? →
One of our experienced Child Protection Advisors will be there to make sure you get the help that you need.

How can CEOP help me? →
Online abuse affects many children and young people every day. CEOP has helped thousands of people in need of support.

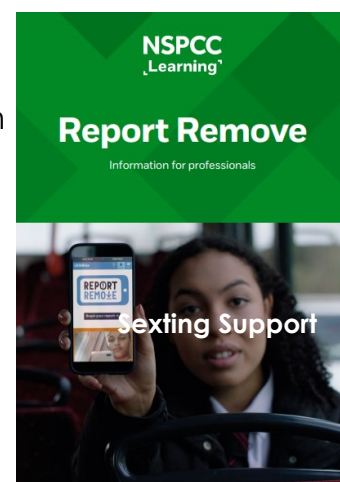
Quick exit

Supporting the use of the Report Remove tool

At Queen Elizabeth's Grammar School we are aware of the pressures on young people and while we advise them not to send personal images, we are also here to support pupils if an image is produced and subsequently control of this image is lost. We understand the range of ways in which young people send images – from consensual through to abusive. While it is important that young people understand the law, as highlighted by the NSPCC, the focus should be on laws that target the illegal distribution of images and not only on discouraging the initial production and sharing that breeds a blame culture when things go wrong.

As a school we will continue to prioritise prevention education that focuses on abusive and exploitive image-sharing. We aim to listen to young people and help them and their families address any issues that arise in line with our own safeguarding processes.

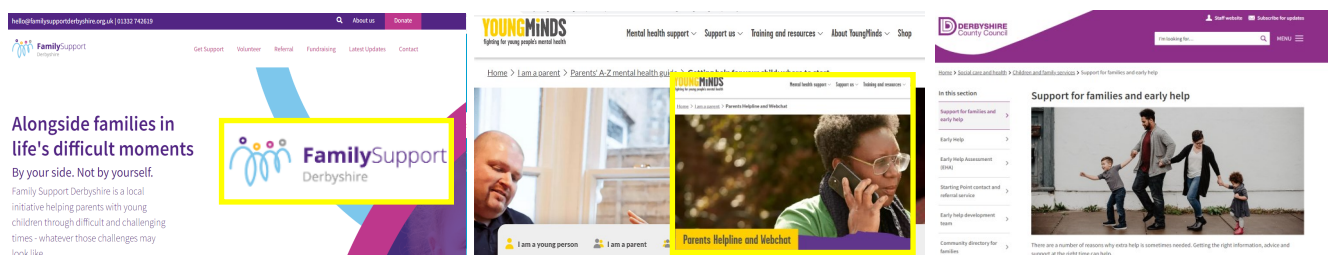
In addition, one website that we want everyone to be aware of is the **Report Remove** tool. This can help to take down nude or sexual images and full details can be found at this link: <https://www.childline.org.uk/info-advice/bullying-abuse-safety/online-mobile-safety/report-remove/>



Support for Parents and Student

At Queen Elizabeth's Grammar School we offer early help support. We work with the Early Help Development team at Derbyshire County Council to provide this support and refer on to them and other agencies where more specialist help is required. We want all parents and carers to feel that we can be contacted if help or advice is needed. More details about the support and guidance available across Derbyshire can be found via the links below:

- QEGS CP Officer: safeguarding@queenelizabeths.derbyshire.sch.uk
- Family Support Derbyshire: familysupportderbyshire.org.uk/get-support/
- Young Minds Parent Helpline/Webchat: youngminds.org.uk/parent/parents-helpline-and-webchat/



Our Partnership with Derbyshire Safeguarding

How we aim to work with local and national agencies

Our school based team have strong links with our authority partners, social care and other agencies.

We hold school based **Early Help Triage** meetings where our child protection officer, family support worker and Deputy Headteacher review and discuss support with our children's service links, and key safeguarding and SEND staff within our school and the primaries we support.

As a school we hold half termly **MAPS** (Multi Agency Planning) meetings. These meetings allow us to raise current case concerns and seek advice, guidance and actions with the support of our Early Help Advisor as well as NHS staff the local police link as well as our **ACE link**.

Our Deputy Headteacher and Child Protection Officer attend **Derbyshire Education Hub Meetings** to ensure partnerships across the area are maintained and information is shared between agencies so that we remain up to date and informed on key notices.

We actively engage with our **Social Care services** where referrals are required and use our **LADO** service where we have concerns that require this input.

During the school day our team are on hand via our direct contact details or through reception. If you have an out of school hours concern please call as below.

Derbyshire out of hours contact number: 01629 533190

Policies and Processes

Our Policy

Like other schools, we have a Safeguarding policy and clear actions for addressing concerns as they arise.

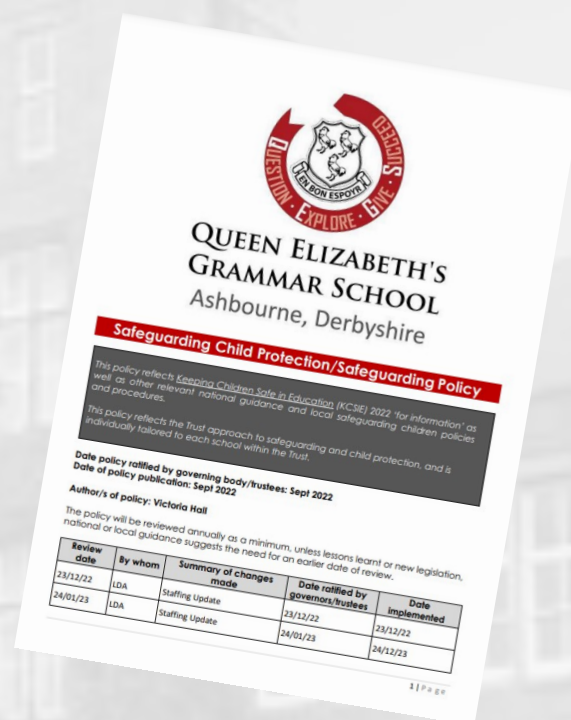
You can view, read and download a copy of our Safeguarding policy and other information direct from our school website:

Policy Link:

<https://www.queenelizabeths.derbyshire.sch.uk/key-information/policies/>

Policy URL:

<https://www.queenelizabeths.derbyshire.sch.uk/wp-content/uploads/sites/5/2023/01/Safeguarding-Child-Protection-Policy-QEGS-Jan-2022-v2.pdf>



Our Policy

Our policy reflects the Keeping Children Safe in Education (KCSIE) 2022 'for information' as well as other relevant national guidance and local safeguarding children policies and procedures. Our policy reflects the Trust approach to safeguarding and child protection, and is individually tailored to our school within the Trust framework of recommendations.

Our child protection/safeguarding policy outlines how we at Queen Elizabeth's Grammar School safeguard and promote children's welfare to keep our learners safe from abuse, neglect, and exploitation. The policy applies to all adults, including volunteers, governors/trustees, supply staff and contractors working in or on behalf of our school.

This policy is reviewed formally each year and is subject to ongoing consideration as we refer to and use the policy throughout the year.

Thank you for taking the time to read this booklet and we hope you have found it helpful and informative.