

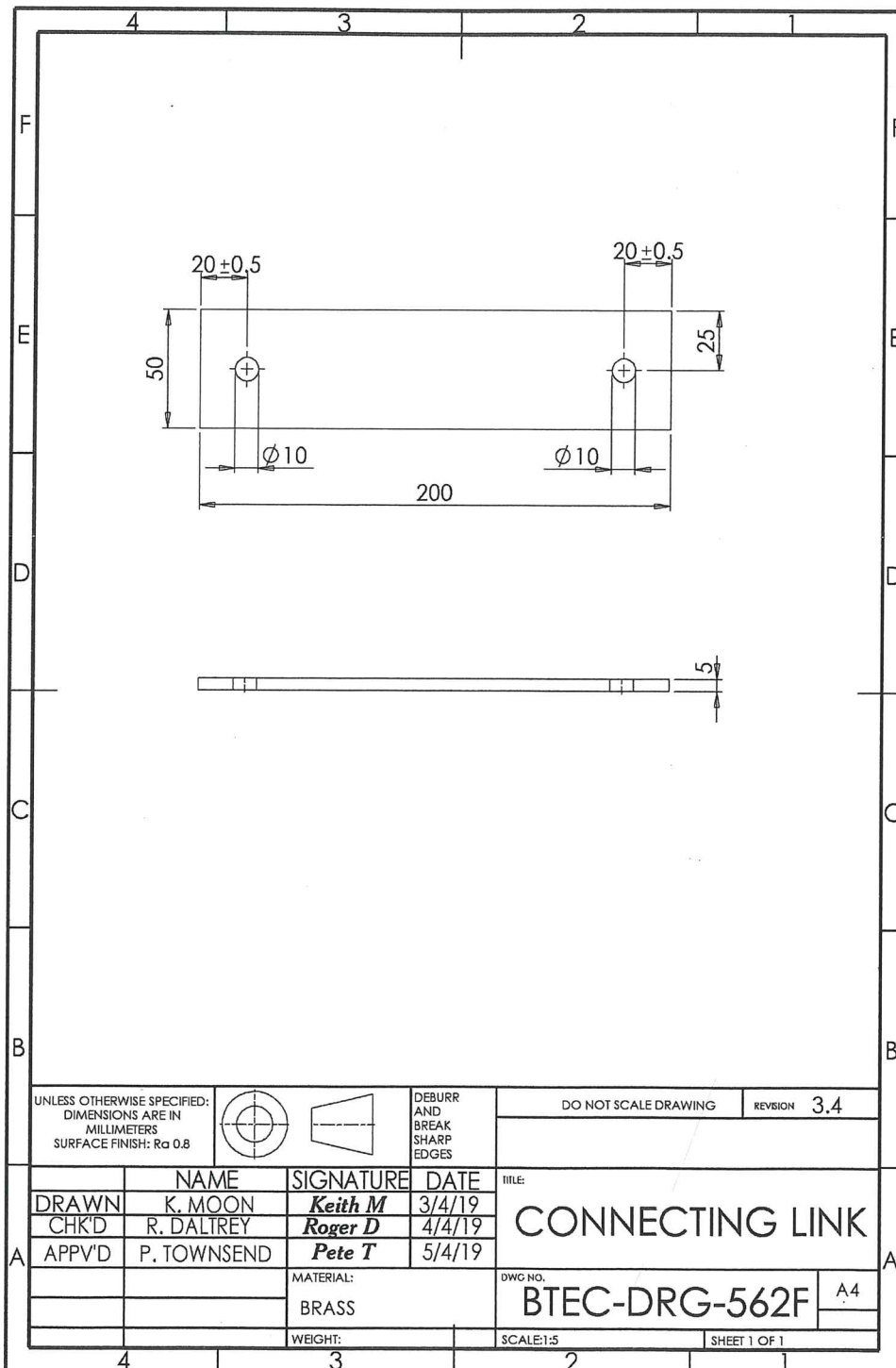
Set task information

Engineering brief

Your engineering organisation is interested in the quality of their manufactured components. The quality control inspector has asked you to review a drawing, manufacturing process and production data to try to understand why issues have occurred during the production of a metal connecting link.

The component will be manufactured in batches of 50 and is made of brass.

The drawing for the component is shown below.



DO NOT WRITE IN THIS AREA

