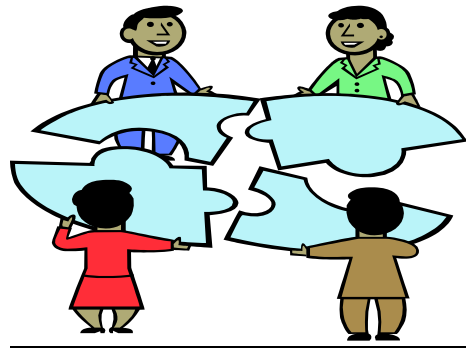


We aim to use a Person Centred approach and assess your family's needs and capabilities.

In all of our work, the family will be at the centre of the outcome where we seek to make a difference whilst making a positive contribution to the family structure.

With your consent we can offer different levels of support, which will be constantly reviewed.



Contact Us

Brendan Drake

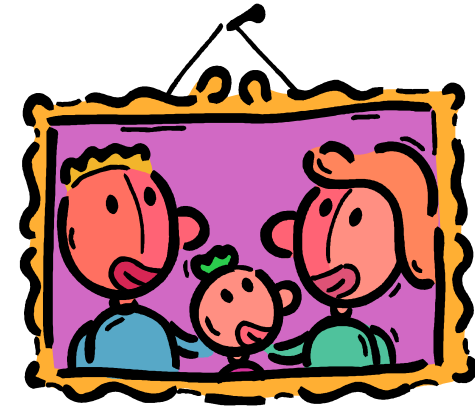
Tel: 01335 343685

Mobile: 07790937313

Email:

drake@queenelizabeths.derbyshire.
sch.uk

Queen Elizabeth's Grammar School
The Green Road
Ashbourne
Derbyshire
DE6 1EP



Family Support Worker

Supporting Young People and their
families



QUEEN ELIZABETH'S GRAMMAR SCHOOL
ASHBOURNE, DERBYSHIRE

Family support Worker

The role of the Family Support Worker is to link the family and the school to encourage a better support system for your child.

The role of a Family Support Worker is to provide support to meet the needs of the young person and their families. In doing this, QEGS hopes students will achieve their full potential whilst school can work with a range of statutory and voluntary agencies. We are here to support and empower parents to make positive change, whilst engaging with families and young people to achieve positive outcomes.

Every Child Matters



Stay Safe

Healthy

Economic Wellbeing

Enjoy and Achieve

Positive Contribution

We aim to work alongside our families and other agencies to achieve a happier way of living for our young people and families.

Agencies that we work alongside:

- Our Partner Primary Schools
- Health Services
- CAHMS
- MAT Team/ IFS Team
- Police
- Housing
- Health Visitors
- Social Care
- Fire Service

And any relevant agency that your family are happy to work alongside.